



TÜV SÜD certified quality

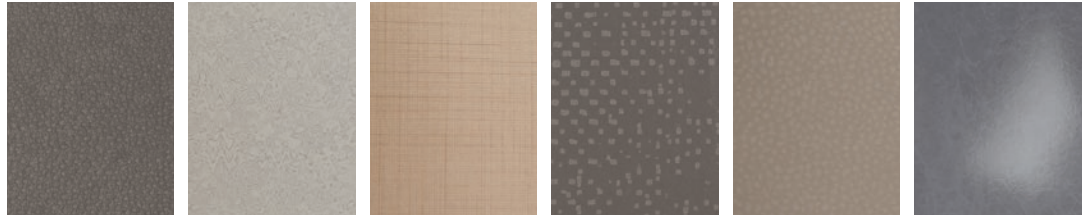
LAMILUX LAMIGraph

INNOVATIVE FIBREGLASS SOLUTIONS

PRODUCT DESCRIPTION

LAMILUX LAMIGraph is a polyester-resin-based, glass-fibre-reinforced laminate with a high-grade décor paper on the visible side. This product optimally combines a wide range of designs with the favourable mechanical properties and resistance of glass-fibre-reinforced products.

VERSIONS



LAMILUX LAMIGRAPH
De Amicis

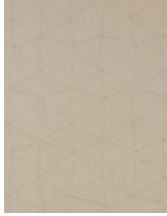
LAMILUX LAMIGRAPH
Keanu

LAMILUX LAMIGRAPH
Lennox

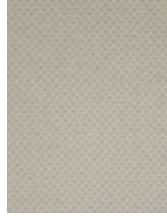
LAMILUX LAMIGRAPH
Metropolis

LAMILUX LAMIGRAPH
Minogue

LAMILUX LAMIGRAPH
Karlsbad



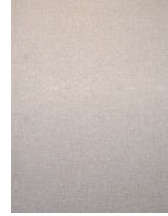
LAMILUX LAMIGRAPH
Nefertari



LAMILUX LAMIGRAPH
Oxford



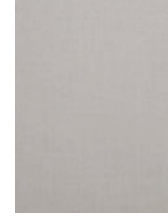
LAMILUX LAMIGRAPH
Aralie Sen



LAMILUX LAMIGRAPH
Crossstone



LAMILUX LAMIGRAPH
Mendip Ash



LAMILUX LAMIGRAPH
Canvas



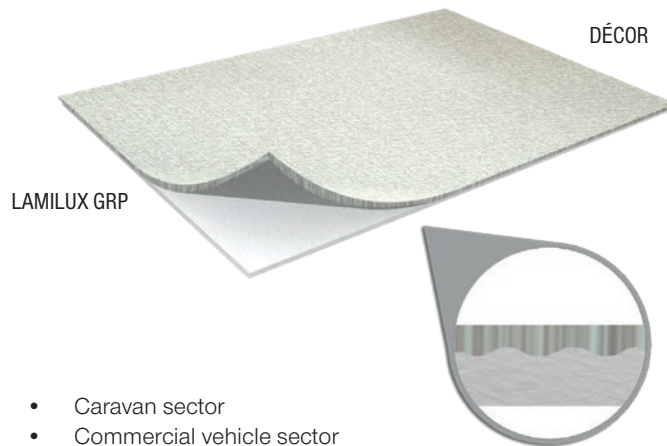
LAMILUX LAMIGRAPH
Tajet Oxford

LAMILUX LAMIGRAPH IS AVAILABLE

- in thicknesses between 1.0 and 3.0 mm
- in widths up to 2.15 m, depending on the décor layer
- in sheets or coils
- with other thicknesses, dimensions or décors, on request
- with different treatments on the back surface (smooth, sanded, soft sanded), on request

SPECIFIC PRODUCT ADVANTAGES

- high strength
- numerous décor options available
- less sensitive to moisture than plywood
- no formation of mould
- no butt joints, in contrast to wooden décor panels



Can be joined without additional adhesive, resulting in reduced weight, lower production costs and shorter process chains.

SECTORS

- Caravan sector
- Commercial vehicle sector
- Bus sector
- Building sector



CARAVAN SECTOR – INTERIOR SIDEWALL



COMMERCIAL VEHICLE SECTOR – VENDING TRUCK

The information in this brochure is based on our current knowledge and experience. It is not a guarantee of technical characteristic features in the scope of specifications. Due to the wide range of usage parameters, users themselves are responsible for testing that the product is suitable for their required use. Changes and errors excepted.